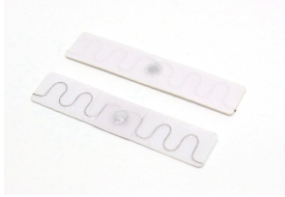


# RTEC L-T7015™



- 200 Industrial Washing Cycles
- Ironing, Pre-drying
- high temperature sterilization
- capable of 60 bar pressure

## Environmental Specifications

|                       |   |
|-----------------------|---|
| Operating Temperature | -30°C to +85°C  |
| Ambient Temperature   | -30°C to +110°C   |
| IP Classification     | IP68  |
| Mechanical Resistance | 60 bars   |
| Chemical Resistance   | Normal common chemicals in the washing processes  |
| Heat Resistance       | Washing: 90°C, 15 mins, 200 cycles<br>Pre-drying: 180°C, 30 mins<br>Ironing: 180°C, 10 sec, 200 cycles<br>Sterilization: 135°C, 20 mins |
| Certifications        | CE approved<br>RoHS approved<br>ATEX/IECEX certified  |
| Warranty              | 2 years or 200 washing cycles   |

## Mechanical Specifications

|                   |  |
|-------------------|--|
| Tag Materials     | Metal Wire   |
| Surface Materials | Textile  |
| Dimensions        | 15 x 70 x 1.5 mm   |
| Weight            | 0.7 g  |
| Color             | White  |
| Attachment        | L-T7015S: Sew in the hem or woven label<br>L-T7015P: Heat-sealing at 215°C@15 sec & 4 bars |

\*During sewing, the stitching thread should not damage the metal wire and chip module. During heat-sealing, recommend 215°C-218°C (15 seconds - 20 seconds).

## RF Specifications

|                           |   |
|---------------------------|---|
| RF Air Protocol           | EPC Global Class 1 Gen2<br>ISO18000-6C          |
| Operating Frequency       | UHF 866-868 MHz (ETSI)<br>UHF 902-928 MHz (FCC) |
| Environment Compatibility | Optimized in Air                                |
| Read Range                | Up to 5.5 m (off metal)                         |
| Polarization              | Linear  |
| IC Type                   | Impinj R6-P                                     |
| Memory Configuration      | EPC 128bit TID 96bit<br>User 32bit              |

\*Read ranges indicated in this datasheet is achieved by using our standard testing methodology. Actual performance will be different if different reader hardware and output power is applied.

## Order Information

|              |               |
|--------------|---------------|
| Product #    | RTEC6-T7015S  |
| Product Name | RTEC L-T7015S |
| Product #    | RTEC6-T7015P  |
| Product Name | RTEC L-T7015P |



**RTEC Singapore**  
57 Mohamed Sultan Road  
#01-05 Sultan Link  
Singapore 238997

**RTEC China**  
L3 Enterprise accelerator B,  
Scientific innovation District,  
MianYang City  
Sichuan, China 621000

